

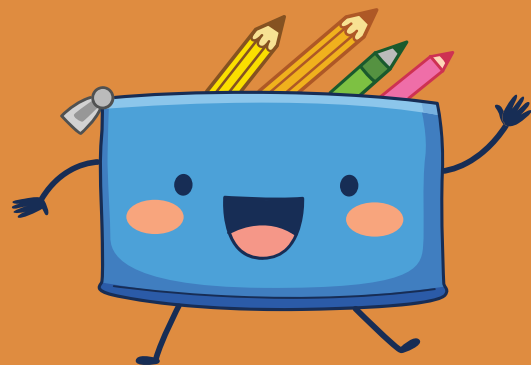
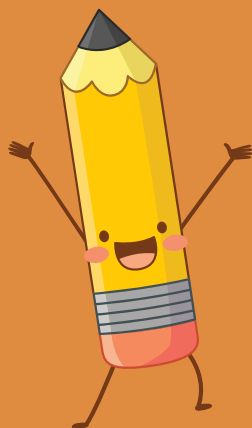


Britannia Primary School and Nursery

# Welcome

Induction for new parents 2026-27

[www.britannia.suffolk.sch.uk](http://www.britannia.suffolk.sch.uk)



# School Vision

**‘Developing Responsible Citizens,  
Confident Individuals and  
Independent Learners’**

## Responsible citizens

- Nurture respect for themselves, others and the environment.
- Build relationships and a learning culture of collaboration and sharing.



## Confident Individuals

- Have the courage to take risks and the resilience to cope with challenge.
- The belief in their own capability to influence their own futures.



## Independent Learners

- Enable learning capacity to flourish by recognising all children as active learners, capable of being resourceful, given supportive conditions.
- Plan experiences and opportunities that promote creativity through a curriculum rich in the Arts, Science and Technology, Humanities, Spiritual, Physical and Emotional Health, Mathematics, Language and Citizenship.



# A Curriculum Full of Opportunities

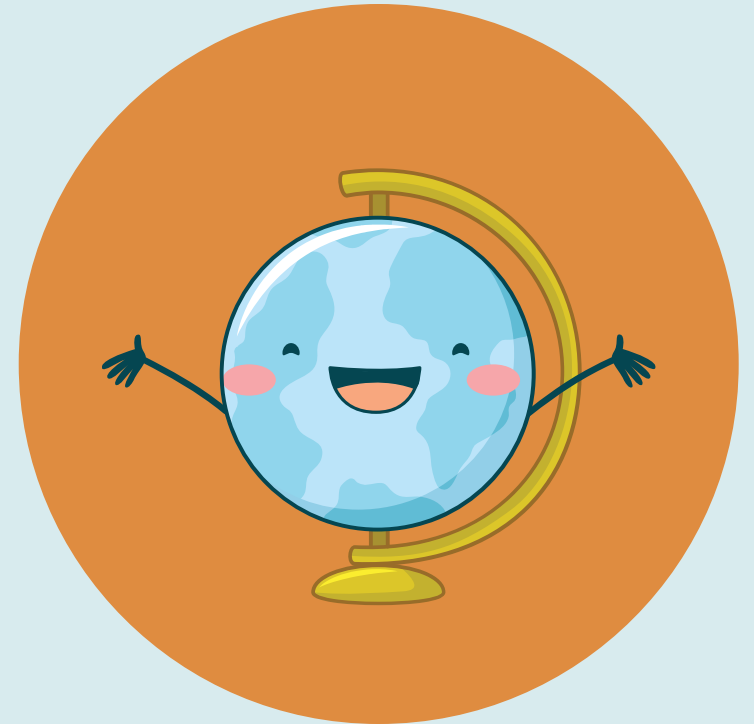
We create a learning environment shaped around each child's needs and interests, building on what they know. Learning starts with their experiences and community, expanding to the wider world. Activities promote positive relationships, equal opportunities and support for all learners, helping children co-operate, share and listen as they grow together.



# Reporting & Assessment

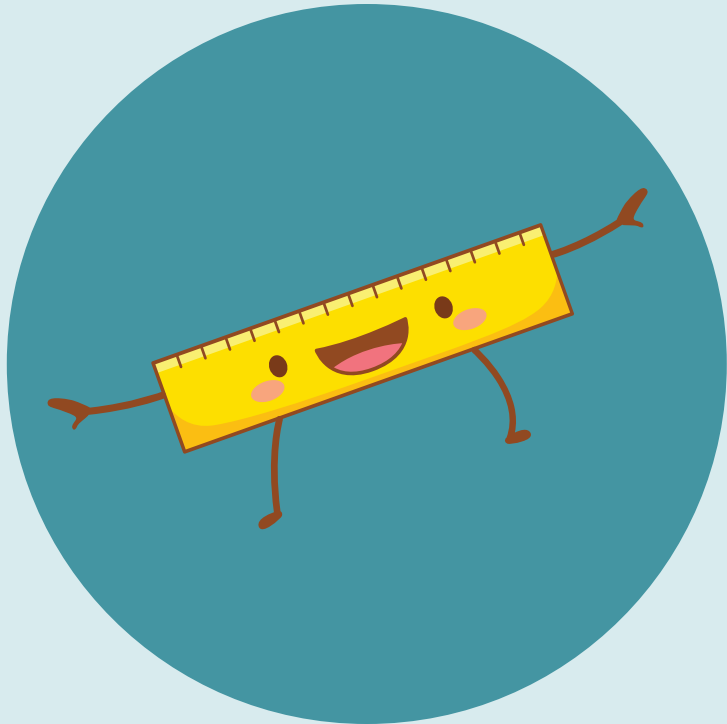
Children's progress is monitored closely from the moment they start, and their journey is tracked throughout the year allowing appropriate support and challenge to be put in place.

- Baseline Assessment upon entry to Reception
- Early Years Foundation Stage Profile (EYFSP) at end of Reception year
- Regular Read Write Inc assessments
- Regular assessments using national tests as well as teacher assessment in KS1 & KS2
- This information is shared with you in the end of year report
- In the Autumn and Spring terms we have two parents' evenings when we discuss your child's progress with you.
- Sharing learning journeys each half term in Reception
- Class Exhibitions Yr 1-6



# Positive Relationships

We believe in positive behaviour and celebrating achievement.

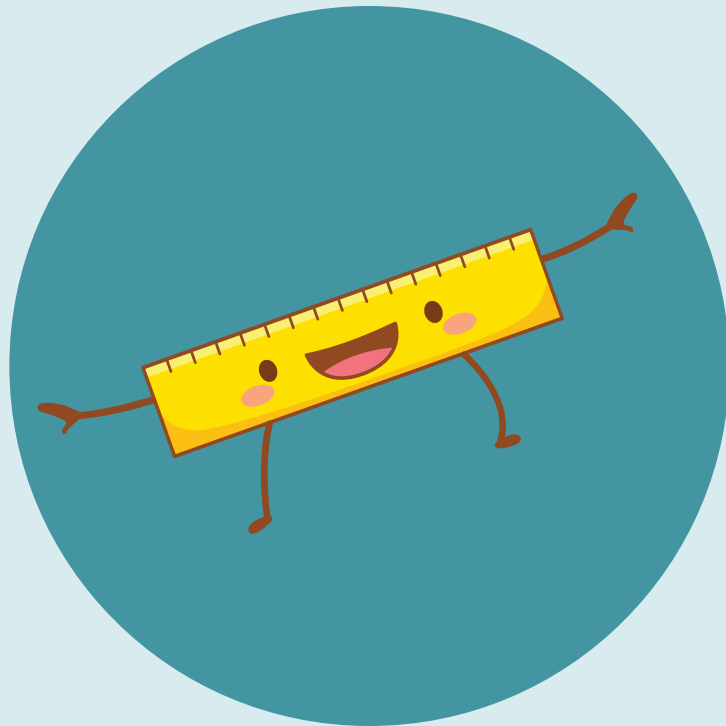



- We have a **school merit system**.
- Each year group devises a **code of conduct** known as a **class promise** appropriate for the age range.
- In years 1-6 the **school council** gives a voice to pupils <https://www.britannia.suffolk.sch.uk/school-council/>
- We have a range of **policies** including Behaviour and Anti-Bullying <https://www.britannia.suffolk.sch.uk/policies/>
- Our behaviour **expectations** are built around our **Four Rs** <https://www.britannia.suffolk.sch.uk/page/?title=Behaviour&pid=244>

# Positive Relationships





We believe in positive behaviour and celebrating achievement.





- Britannia's Four Rs for Positive Behaviour



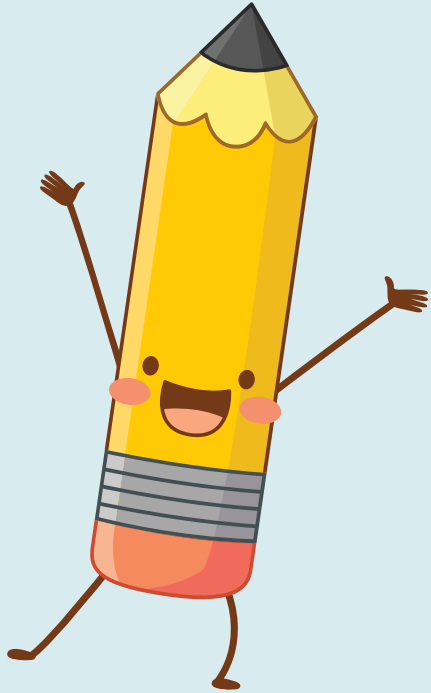
 **Britannia's Four Rs  
for Positive Behaviour**

We are...

Respectful	Responsible	Resilient	Reflective
			

- **Respectful** – everyone feels valued and safe  

- **Responsible** – we make thoughtful decisions on our own  

- **Resilient** – we can deal with problems and challenges  

- **Reflective** - we think about our actions and behaviour  


# What we expect from parents and pupils



- Children to attend school each day (see attendance slide)
- To keep us informed of any change in circumstances that may affect learning. <https://www.britannia.suffolk.sch.uk/family-liaison-officer/>
- Children to come to school in uniform . On PE days children come to school wearing their PE kit.  
<https://www.britannia.suffolk.sch.uk/uniform>
- School uniform, PE kit and book bag can all be purchased from <https://pmgschoolwear.co.uk>

**What do I wear on PE day?**

You will need to come to school wearing your PE kit. These can all be purchased from <https://www.pmgschoolwear.co.uk/>

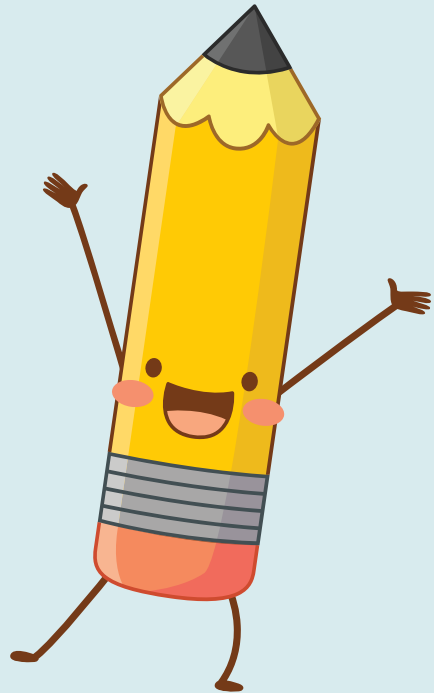


**What do I need to wear?**

You will need to wear a school uniform which can be purchased from <https://www.pmgschoolwear.co.uk/>



# What we expect from parents and pupils

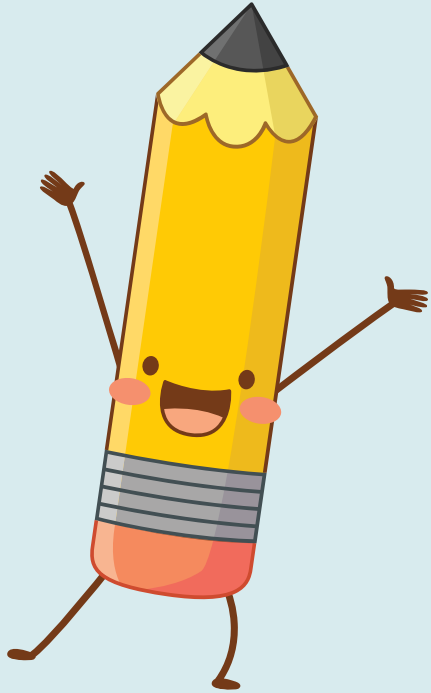


Children to take on responsibility for themselves and their belongings

- <https://pmgschoolwear.co.uk>



# Attendance



- If your child is unwell and not attending school please notify the school on the first day of absence, and each day after.
- Only the Principal can authorise attendance (please note attendance policy)
- Holiday requests cannot be granted unless there are EXCEPTIONAL circumstances.
- If your child has had sickness or diarrhoea they must have 48 clear hours before returning to school.

# Attendance matters

## ATTENDANCE

### WHY IS IT IMPORTANT?

**ABSENCE FROM SCHOOL**  
Children are required by law to attend school 190 days per year. The Government states that every pupil's attendance should be at least 95%.


How do YOU measure up?

Attendance	Days	Weeks	Lessons
	Absent	Absent	Missed
95%	9 Days	2 Weeks	50 Lessons
90%	19 Days	4 Weeks	100 Lessons
85%	29 Days	6 Weeks	150 Lessons
80%	38 Days	8 Weeks	200 Lessons
75%	48 Days	10 Weeks	250 Lessons
70%	57 Days	11.5 Weeks	290 Lessons
65%	67 Days	13.5 Weeks	340 Lessons

**89% & Below**  
Drastic effect on academic achievement

**95%-90%**  
Cause for concern

**100%-96%**  
Excellent

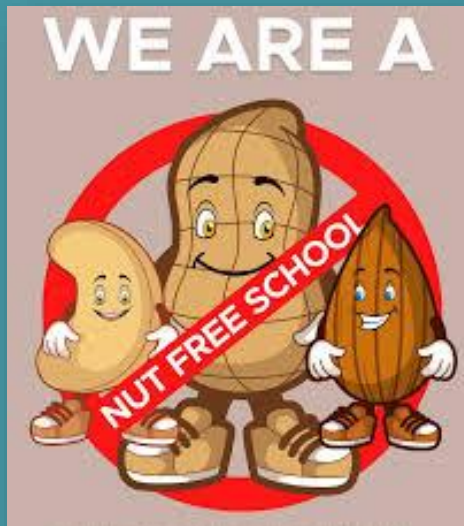




# Food and Drink

[www.britannia.suffolk.sch.uk/school-meals](http://www.britannia.suffolk.sch.uk/school-meals)

- Your child can have a Hot school dinner, a Cool school meal, Baked potato or bring a packed lunch.
- School meals can be purchased through Parentmail, however school dinners are free for all children in Reception and Years 1 and 2.
- Please ensure your child can use a knife and fork.
- Send your child with fresh water in a named bottle each day. This will be kept in the classroom.
- Snack is provided by the school but if you wish to send in a snack it must be fresh fruit or vegetables.
- Lunchboxes must NOT contain chocolate or sweets or all types of chocolate spread. We are a NUT FREE school.
- Please make sure children can manage cartons / sachets



# Health



Physical exercise is an important part of your child's day

- PE is an essential curriculum subject, and you are expected to ensure your children are properly kitted out so they can participate. No earrings and hair must be tied up

Hygiene

- Children are taught to wash their hands regularly and particularly after using the toilet, blowing noses and before eating.
- Children are taught to use tissues and to dispose of them in a bin.
- Toilet and handwashing facilities and surfaces are cleaned regularly.


Medication

- If your child requires medication in school you **MUST** complete a medical form.
- Inhalers and Epipens are kept securely in classrooms for emergency access if needed. Other medication is kept in the school office.

Accidents/Illness

- If your child has an accident in school, we will treat your child and send a note home to inform you.
- If your child has a bump to the head, a more serious injury or they are unwell we will call you to either inform you or ask you to collect your child if necessary.

# Additional Information

- **BFF (Britannia Friends And Family)** is an active organisation of which YOU are all members .  
<https://www.britannia.suffolk.sch.uk/britannia-friends-and-family-bff/>
- There is a Breakfast Club & After School Club run by ABC childcare situated at the end of the school field.  
<https://abcchildcare.org.uk/our-clubs/free-time/> 
- **PLEASE** keep us informed of any changes as an emergency contact is **essential** for our data base.  
<https://www.britannia.suffolk.sch.uk/contact-the-school/>
- Annual calendar with all major events  
<https://www.britannia.suffolk.sch.uk/term-dates/>
- Newsletters <https://www.britannia.suffolk.sch.uk/newsletters>



# Free School Meals

## Free School Meals – Additional Support for Your Child

Your child may be eligible for **free school meals**. If you apply and qualify, your family will also receive the following benefits at **Britannia Primary School**:

- **Free access to all after-school clubs**
- **School trips fully funded** at no cost to you

Applying is quick and confidential, and it helps ensure your child can take part in every opportunity school has to offer. For further information please visit

<https://www.suffolk.gov.uk/children-families-and-learning/schools/school-meals-uniforms-and-trips/apply-for-free-school-meals>

If you have any questions or would like further clarification, please email the Free School Meals Team: [freeschoolmeals@suffolk.gov.uk](mailto:freeschoolmeals@suffolk.gov.uk)