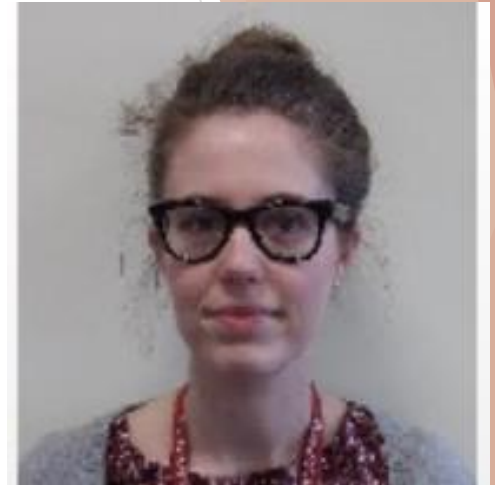




# Welcome to Year 6

## Year 6 Teachers

- Mr Birch (6B)
- Miss Bridges (6MB)
- Mrs Jordan/Mr Williamson (6JW)



# Our Year 6 Classrooms



**6B**



**6JW**



**6MB**



# Entrance and exit

via the bell door.

# Coat pegs

- ▶ 6JW and 6B, you will hang your coats and bags up in your classrooms.
- ▶ 6MB, you will hang your things up in the cloakroom next to your classroom



# Toilets

We use the toilets near the hall, as you come in from the bell door playground.



# What is the same?



High expectations for your behaviour and attitudes to learning



Break time is still 10.45 - 11.00am.



Lunchtime is still 12.30 - 1.35pm



We use the traffic lights



We have spotlight pupil!



Homework each week and homework club



Our curriculum and timetable will be similar to Year 5



We have the same PPA subjects – French, computing and music



We visit the library every week

We still wear full uniform  
or PE kit on PE days.



# What is *different?*

All classes are upstairs

Year 6 eat packed lunch in  
6JW/6MB classrooms at 12.30pm

There is more opportunity for  
responsibility, e.g. sports leaders

Our residential to the Isle of  
Wight!

More opportunities to represent  
the school



We look forward  
to seeing you in  
September!